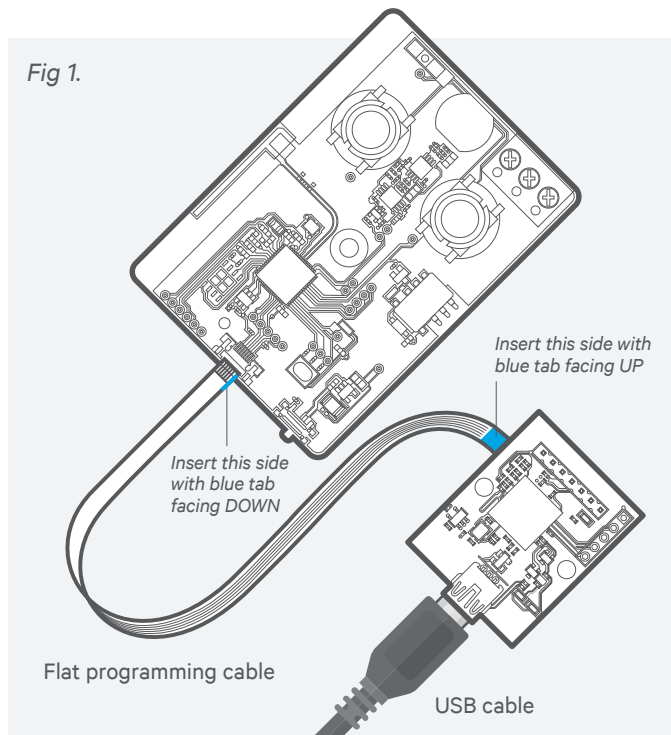


Fig 1.



Next steps and support for your IoT Development Kit

The system is now ready to be programmed using the installed SDK.

Example IoT projects can be found at:

<https://developer.qualcomm.com/csr102x/tools>

The system is now ready to be programmed using the IoT application of your choice. Please refer to the accompanying application notes for further details.

Once programmed the system is ready for use.

Community forums

<https://developer.qualcomm.com/forums/qdn-forums/hardware>

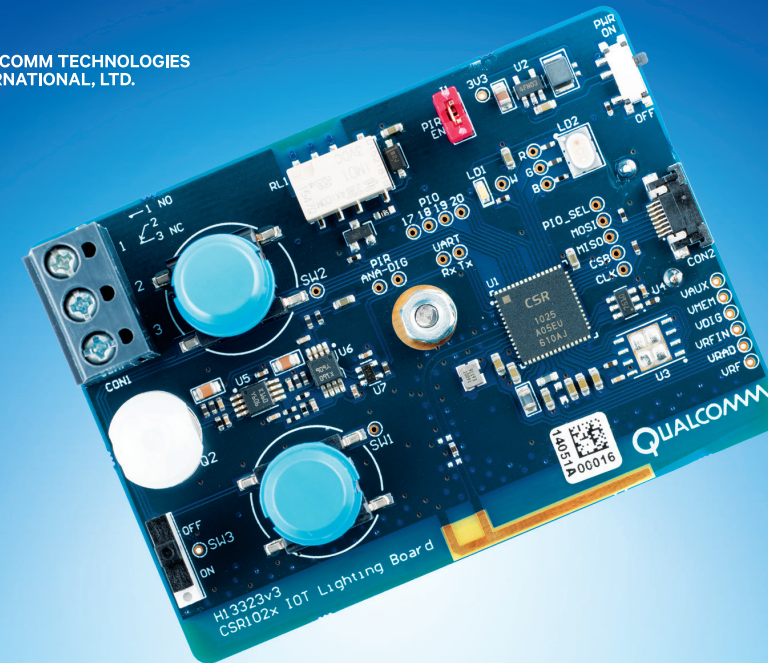
Product info

<https://developer.qualcomm.com>

© 2017 Qualcomm Technologies International, Ltd. All rights reserved. Qualcomm is a trademark of Qualcomm Incorporated, registered in the United States and other countries. The Bluetooth® word mark and logos are registered trademarks owned by Bluetooth SIG, Inc. and any use of such marks by Qualcomm Technologies International, Ltd. is under license. Other products and brand names may be trademarks or registered trademarks of their respective owners. This technical data may be subject to U.S. and international export, re-export, or transfer ("export") laws. Diversion contrary to U.S. and international law is strictly prohibited.



developer.qualcomm.com



CSR102x IoT Development Kit

Bluetooth® Low Energy Single Mode SoC

Setup Guide

A product of Qualcomm Technologies International, Ltd.

80-CE181-1 Rev.A

This Setup Guide helps you set up and use your CSR102x IoT Development Kit

Component list

01 CSR102x IoT Development Board (x3)

- | | |
|-------------------|--------------------------|
| A. Slide switch | G. RGB LED |
| B. PIR sensor | H. Power switch |
| C. Relay contacts | I. Programming connector |
| D. Relay | J. Antenna |
| E. White LED | K. Push buttons |
| F. PIR isolate | |

02 Flat programming cable

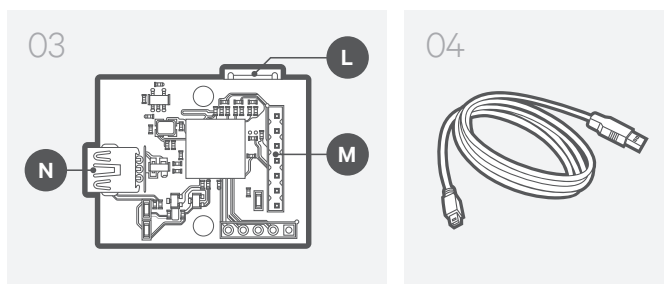
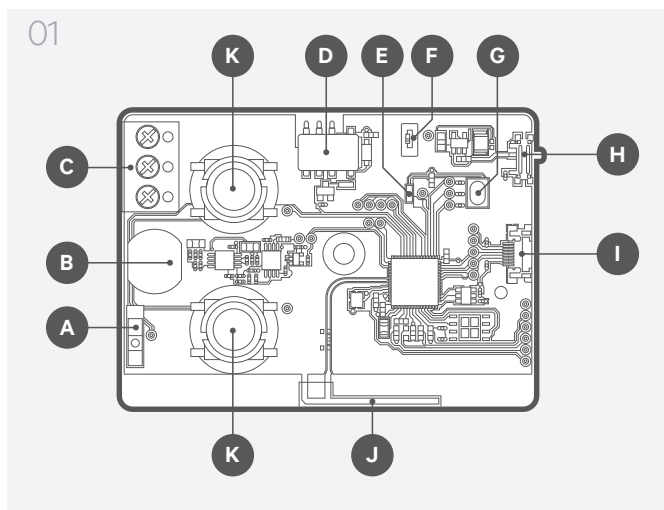
For programming external boards (not included).

03 Programming board

- | |
|--|
| L. Programming/Debug connector (underside) |
| M. Programming/Debug pins |
| N. USB connector |

04 USB cable

For programming and debugging connection to host PC



Downloading and installing software on development PC

01 Downloading the SDK requires registration. The packaging of this development kit contains an activation code.

For instructions on how to complete this process, visit: <https://developer.qualcomm.com/csr102x-activation>

02 Ensure all software is installed before connecting any hardware.

It is recommended that all default options be selected during installation.

Setting up and connecting the development hardware

Note: Ensure the software is installed on the development PC before proceeding.

01 Remove the IoT Development Board from the anti-static packaging at an appropriate workstation.

02 Insert batteries (batteries not included).

Ensure that batteries are inserted with correct polarity as indicated in the battery compartment.

03 Connect the IoT Development Board to the programming board using the flat programming cable.

The flat cable must be in the correct orientation as shown on the back page diagram (Fig 1).

04 Connect programmer board to the development PC using the USB cable.

05 Ensure board is switched on before proceeding.